

Amtico Click Smart

Installation Guidelines

ACS-IM-20180201-06-GB

Before you Begin

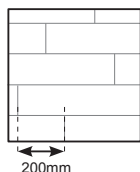
- Suitability for usage
 - Residential:** Amtico Click Smart is suitable for use in interior residential areas, including kitchens, hallways, living spaces and bathrooms, but not recommended in conservatories or unheated areas.
 - Light Commercial:** Amtico Click Smart is suitable for use in most light commercial locations apart from those subjected to heavy rolling loads, high traffic or wide temperature fluctuations. For a full list of suitable locations please contact Amtico.
- Can be fitted onto all existing hard floor coverings and onto subfloors that are smooth, hard and flat.
- Levels should not vary by more than 2-3 mm in a 2 m area; if they do preparation works will be required.
- Amtico Click Smart must remain a free floating installation; do not fix any items through the flooring.
- Amtico Click Smart should be the last thing installed into the room and after all other works and installation of fitted units, avoiding the risk of accidental damage.
- Expansion gaps
 - Residential:** Amtico Click Smart is extremely stable; however we do require expansion gaps at the perimeter of the room and around all fixed objects. For rooms up to 10 m length this gap should be at least 2mm and can be concealed with the skirting or with a cover trim. For rooms 10-20 m in length this should be increased to 5 mm on all sides. Expansion gaps must be allowed at all doorways.
 - Light Commercial:** For all commercial areas we recommend expansion gaps of 5mm are allowed at the perimeter of the rooms and around all fixed objects, and at all doorways. For areas longer than 20 m expansion gaps must also be allowed within the floor.
- Suitable for use with electric and water underfloor heating systems (surface floor temperature should be regulated to 27°C max).
- Amtico Click Smart can be installed onto damp floors at up to 95% humidity.
- Acclimatisation
 - Residential:** Always store the boxes of product flat, and leave them in the room to be fitted for 24 hours to acclimatise to the temperature of installation (18-25°C). If tiles have been stored within this temperature range acclimatisation time can be reduced.
 - Light Commercial:** Tiles must always be acclimatised for 24 hours. When acclimatising product where tiles have been stored significantly outside of the 18-25°C range the acclimatisation period should be increased to 48 hours.
- View our **Click Smart installation video** on www.amtico.com/click-smart-installation-video.

Preparation

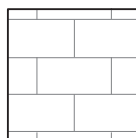
- Amtico Click Smart can be installed over any existing hard floor surfaces, such as ceramic, vinyl and linoleum provided that it is in a reasonable condition and provides a smooth and level base without undulations. Carpet or damaged floorcoverings should be removed.
- Ensure the floor is level; any roughness, height changes or deep grout lines should be smoothed using a levelling compound to ensure a good finish.
- On wooden bases, loose boards should be re-fixed and if the floor is uneven or has movement / flexibility a new plywood base may be needed to ready the floor for installation.
- In cases of doubt of subfloor suitability please contact a flooring professional or Amtico directly.

Receiving and Setting out your floor

- Check the style, colour, quantity of product and inspect for any damage. Installation of flooring implies acceptance of materials.
- For a professional appearance a floor should be balanced with even cuts at the edge of a room. This can be done by measuring the width of the room and working out how many full tiles are needed, the remaining measure can be balanced at either end. It is recommended that these cuts are not too small. If so reduce the number of full tiles by one to give a larger cut tile. We suggest 20-30% of a full tile is the smallest cut.
- The tiles should be set out using the plans below for best appearance and stability.



Wood effect: Tiles should be fitted with random staggered joints with a minimum 200 mm between short ends.



Stone effect: Tiles should be fitted in a brick pattern.

Recommended tools

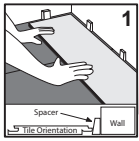
- Rubber mallet, pull bar, spacers, laminate cutter, Jig saw (utility knife or flooring guillotine can also be used)
- Amtico Click Smart is a tough product. Tiles can be cut with a laminate cutter or a jigsaw fitted with fine tooth blades, which is especially useful for intricate cuts.
- Tiles can also be cut using a sharp knife and a metal rule. Carefully score several times, and the tile can then be snapped with two hands, the underlay backing will need to be cut through.

Amtico Click Smart

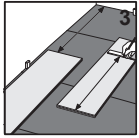
Installation Guidelines

ACS-IM-20180201-06-GB

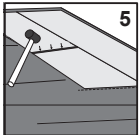
Installation



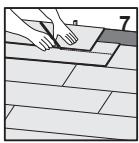
1 The first row of tiles should be placed against the wall with the tongue nearest the wall working from left to right, cutting tiles to the correct width if required.



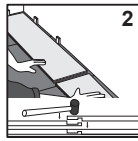
3 Continue to fit this row in the same manner, cutting the last tile to size allowing the required expansion gap.



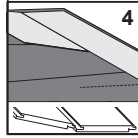
5 The next tile should be inserted at an angle, closely touching the previous tile in the row then lowered into position. The end joint should be firmly tapped with a rubber mallet to lock it into place.



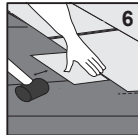
7 Continue fitting full rows in this manner, keeping joints correctly aligned and ensuring the tiles are all properly connected. The last row of tiles should be cut to size, allowing the correct expansion gap and fitted in the same manner.



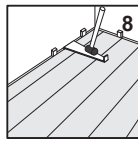
2 The second tile should be aligned above and tapped into place with a mallet. Level end joints indicate tiles are correctly connected. Care should be taken to make sure they are exactly aligned and that spacers are used to allow expansion space.



4 To begin the second row, cut tile to required length, angle the tongue of the new tile into the groove of the already fitted tile and lower into place, while maintaining the layout illustrated previously.

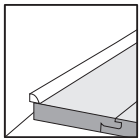


6 If necessary use a tile offcut as a tapping block, gently tap with a rubber mallet to ensure edges are well aligned.

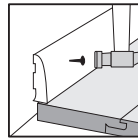


8 A pull bar can be useful for this final row of tiles.

Finishing the room



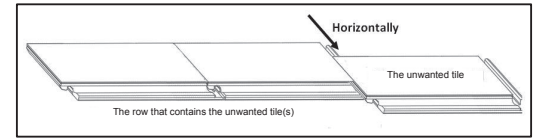
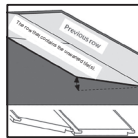
A trim can be affixed to cover the expansion gap.



Skirtings can be used to cover the expansion gap and doorframes can be undercut before installation to the correct depth to enable a neat finish

Uninstallation

Detach the whole row that contains the unwanted tile(s). **Always slide the end joints apart** horizontally if uninstalling any tiles, pulling them apart in any other way will damage the mechanism.



Repairs

In cases of damage during the life of the floor repairs can either be made by taking product up from the wall, or alternatively individual tiles can be replaced without removing the entire floor by cutting out the damaged tile. Please consult Technical Services **02476 861409** for more details.

Cleaning and Care

- All floors should be swept or dust mopped regularly to remove large particles of dirt and grit.
- Floors should be cleaned with a damp mop as required. Prepare a solution of Amtico Floor Maintainer, and apply using a damp mop. Then allow the floor to dry.
- For commercial cleaning options please consult our cleaning and maintenance guidelines on our website for full details.

Aftercare Hints and Tips

- Always use door mats to help keep your floor clean and free from grit which can cause scratches.
- Avoid rubber backed mats as these may stain the floor.
- Use a dust mop or soft brush rather than vacuum cleaners as these can trap grit beneath the vacuum cleaner base and the floor surface.
- Protect against accidental scratching by fitting felt pads or other glides to the feet of furniture.
- Use furniture cups with felt pads affixed beneath under heavy items to spread the weight loading limiting possible indentation.
- Avoid the use of steam mops as these may damage your flooring.
- Amtico Click Smart has excellent slip resistance when clean and dry, but can become slippery through spills of water, oil and grease. In these cases clean up spills immediately.
- Overspray from furniture or glass polish and other similar types of silicone products can also cause floors to become slippery and their use should be avoided.
- Do not allow cigarettes, matches or other very hot items to come into contact with the floor which may lead to permanent damage.

For more information please visit our website where you can watch our Click Smart installation video at www.amtico.com/click-smart-installation-video

Page 2 of 2

Amtico International Head Office
Kingfield Road
Coventry
CV6 5AA

T: 024 7686 1409
F: 024 7686 1435
technical.support@amtico.com
amtico.com

amtico
A MANNINGTON COMPANY